



SCHÜTZINGER



Electrical Connectors for test and measurement

Ø 4mm Programme

2012-S-303B



Company profile

The company Gerhard Schützinger Labor-Schütz GmbH, Stuttgart was established in 1949 by Gerhard Schützinger (born in 1921).

Today, production comprises a wide range of standard and special products for measuring apparatus and fittings, covering practically every form of application in the field of electrical laboratory and testing equipment. Specific customer requirements are analysed by creative employees and efficiently realized. Our team of highly qualified experts helps our customers to secure advantages based on more than 50 years of experience

to solve their tasks. Continuity in the development of our products and in dealings with our customers guarantee a stable and reliable partnership.

In 1993 responsibility for the company was transferred to the managing partners Michael and Bernhard Schützinger, the company founder's sons. Both have many years of active experience in the company, Michael since 1976 and Bernhard since 1978.

Labor-Schütz products are manufactured with high precision, using materials of high quality. At the design stage, great value is set on functional suitability, ergonomics and excellent form. Consistent superior quality is attained as the result of modern production methods and continual controls. Furthermore, importance is always attached to the use of environment-friendly raw materials. Products relevant to safety are tested by the trade association and are officially approved of. A further field of activity is the production of special plug connectors for the low-voltage lighting sector.

Alongside the Labor-Schütz range of products, we have successfully operated as an independent commercial agency since 1950, representing reputable German companies of the electrical industry.

Main characteristics and advantages

Single-pole plug connectors for the transmission of voltages, currents and electrical measurement data.

High-grade materials such as spring brass and silver-plated or nickel-plated surfaces guarantee excellent contact reliability and prevent corrosion. These universal functional articles thus comply with the high standards required in laboratories and in the field of metrology.

Robust assembly

Crush-proof insulation means that these plug connectors also withstand considerable mechanical loads.

Wide range, universal application

Plug connectors: Connections optional, soldered or as socket clamp connection, plugs with lamella-basket contact.

Threaded sockets: Many types for various requirements: fully insulated or bare.

Terminal posts: Types for different front panel thicknesses and currents.

Crocodile clips: Bare, partially or fully insulated with soldered, screw-in and press-in connection.

Measuring leads: Types suitable for operation in the extra-low voltage range and for constant currents up to 32 A. Simple possibility of interchange due to parallel or axial socket connection.

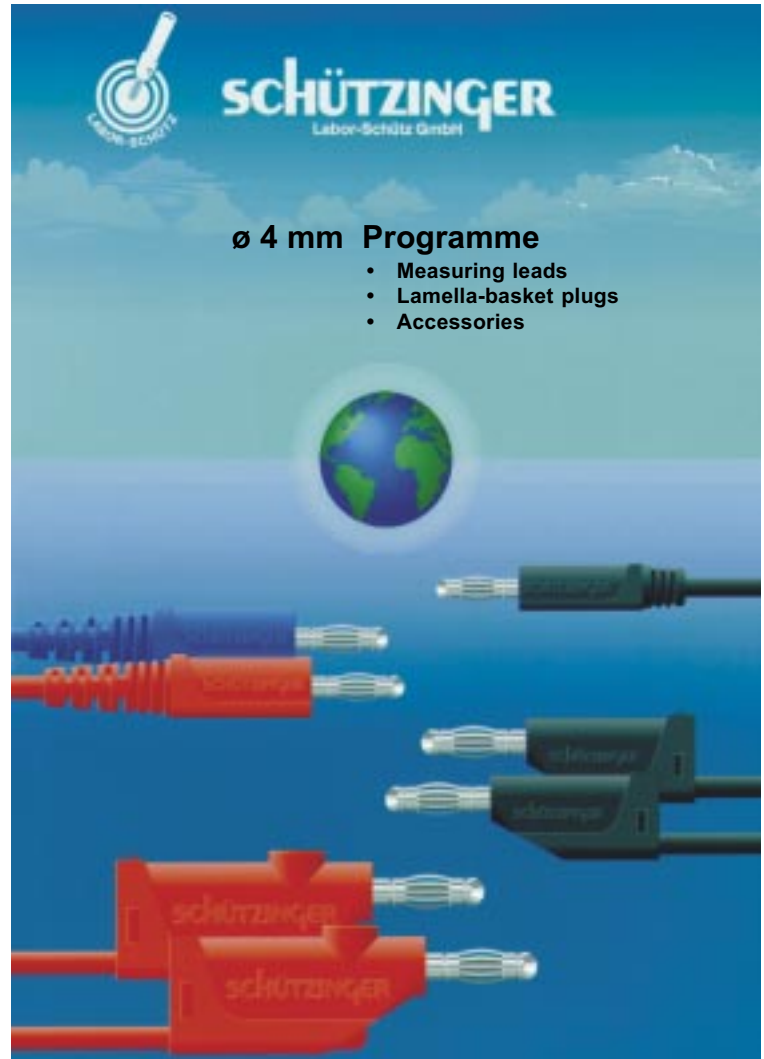
Couplers: For ø 4 mm plugs as well as types with soldered connection.

Quick-release terminals: Different types for various requirements - with soldering connection or with socket for flat pin sleeve 6.3 mm. As threaded or press-in quick-release terminal ideally suitable to achieve quick contact of strands and wires.

Important note

This laboratory range with insulated grasp is designed for functional handling and safest operation for the user. It is intended for use with extra-low voltages. In this respect we refer to the VDE regulations VDE 0100, VDE 0105 and the regulations for the prevention of accidents VBG 4 of the trade association of precision engineering and electro-technics.

If you have any queries regarding application possibilities, technical data or special designs we will gladly advise you.



ø 4 mm Programme

- Measuring leads
- Lamella-basket plugs
- Accessories

Max. voltage for direct contact with bare parts:

30 V_{AC} / 60 V_{DC}

General information

In the case of special applications, verification whether products listed in this catalogue comply with regulations other than those stated is the responsibility of the user.

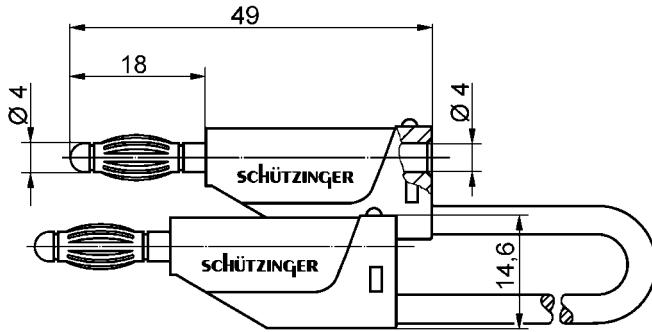
Reference to other laboratory plug connector series

Our ø 2 mm programme is to be found page 1
Our ø 2.4 mm programme is to be found page 9

Touchproof types for 1000 V, CAT III

Our ø 4 mm safety laboratory programme with rigid sleeve and sliding sleeve is to be found page 45

SCHÜTZINGER – to be sure!



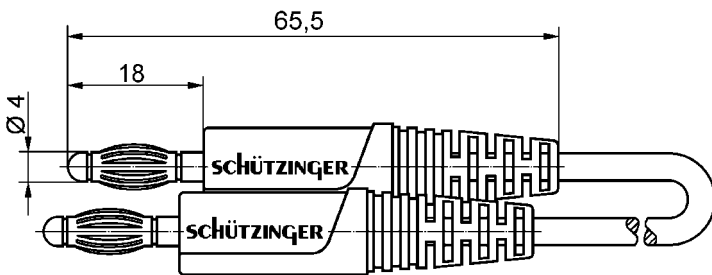
Measuring lead

- with axial socket
- 2 lamella-basket plugs welded on highly flexible PVC lead with double insulation
- sleeves marked with the wire square-section

order no. MFK 15 / 1 / ..(length) / ..(colour)

- lead 1 mm²
PVC double insulated
- contact parts **nickel-plated**
- sleeves PE (Hostalen)

colours: see table



Measuring lead

- 2 lamella-basket plugs soldered on PVC-double-insulated highly flexible lead

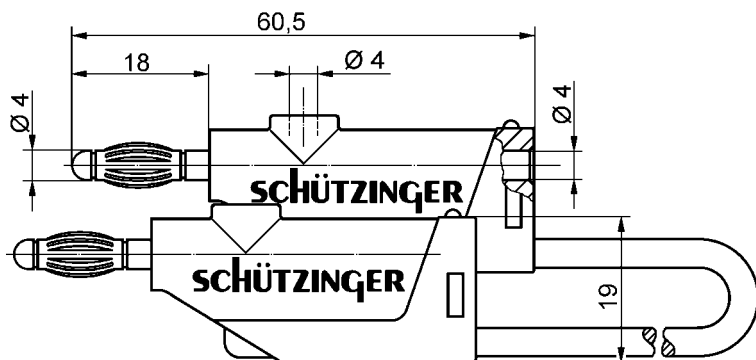
order no. MFK 09 / 2,5 / ..(length) / ..(colour)

- lead 2.5 mm²
PVC double insulated
- contact parts **nickel-plated**
- sleeve TPE (Evoprene)

colours: see table

General information			Technical data				
order no.	length	colours	leads	transition resistance	rated voltage	rated current	operating temperature
MFK 15 / 1 / ..(length) / ..(colour) contact parts nickel-plated	25 cm	black,	PVC 1 mm ²	5 mΩ	30 V _{AC} 60 V _{DC}	16 A	- 10 °C ... + 80 °C
	50 cm	red, blue		10 mΩ			
	100 cm	yellow, green,		20 mΩ			
	150 cm	green-yellow		30 mΩ			
	200 cm			40 mΩ			
MFK 09 / 2,5 / ..(length) / ..(colour) contact parts nickel-plated	100 cm	black red	PVC 2.5 mm ²	18 mΩ	30 V _{AC} 60 V _{DC}	16 A	- 10 °C ... + 80 °C

Other lengths, colours, wire square-sections, platings and Silicon-cable on request



Measuring lead

- with axial and parallel socket.
- 2 lamella-basket plugs welded on highly flexible PVC lead with double insulation
- sleeves marked with the conductor square-section

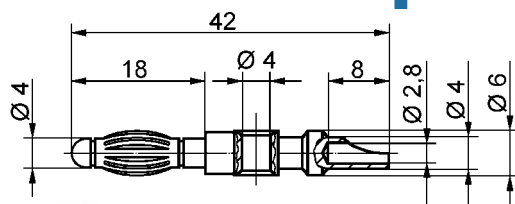
order no. MFK 20 / 2,5 / ..(length) / ..(colour)

- lead 2.5 mm²
PVC double insulated
- contact parts **nickel-plated**
- sleeves PE (Hostalen)

colours: see table

General information			Technical data					
order no.	lenght	colours	leads	transition resistance	rated voltage	rated current	operating temperature	
MFK 20 / 2,5 / ..(length) / ..(colour)	25 cm	black red	PVC 2.5 mm ²	5 mΩ	30 V _{AC} 60 V _{DC}	32 A	- 10 °C ... + 80 °C	
contact parts nickel-plated	50 cm			9 mΩ				
	100 cm			18 mΩ				
	150 cm			27 mΩ				
	200 cm			35 mΩ				

Other lengths, colours, wire square-sections, platings and Silicon-cable on request



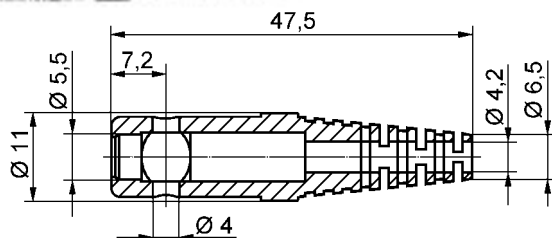
Lamella-basket plug

- straight, with soldering cup
- with sleeve, unassembled

order no. FK 8 L / ..(colour)

- contact part **nickel-plated**
- sleeve TPE (Evoprene)
- for wire square section up to **2,5 mm²**
- for insulation diameter up to **4 mm**

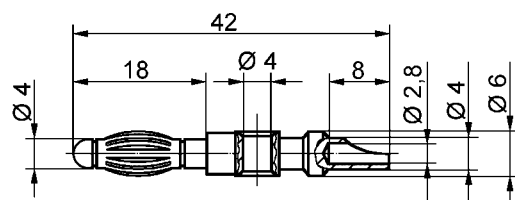
colours : see table



order no. FK 8 L AU / ..(colour)

- as above, but contact parts **gold-plated**

colours : see table



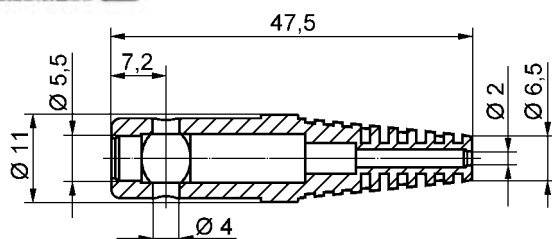
Lamella-basket plug

- straight, with soldering cup
- with sleeve, unassembled

order no. FK 82 L / ..(colour)

- contact part **nickel-plated**
- sleeve TPE (Evoprene)
- for wire square section up to **0,5 mm²**
- for insulation diameter up to **2 mm**

colours : see table



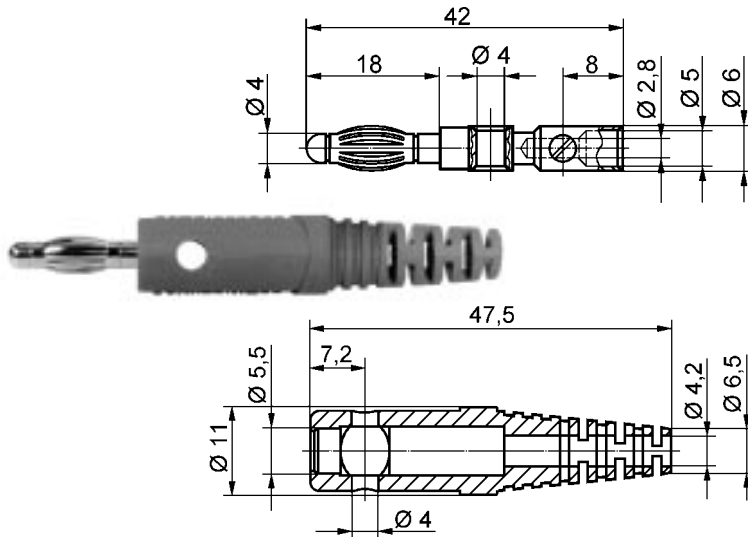
order no. FK 82 L AU / ..(colour)

- as above, but contact parts **gold-plated**

colours : see table

General information			Technical data				
order no.	sleeve for lead	colours	terminal	transition resistance	rated voltage	rated current	operating temperature
FK 8 L / ..(colour) contact part nickel-plated	Ø 4 mm		soldering - 2,5 mm ²	3 mΩ	30 V _{AC} 60 V _{DC}	32 A	- 30 °C ... + 110 °C
FK 8 L AU / ..(colour) contact part gold-plated	Ø 4 mm	black red blue	soldering - 2,5 mm ²	3 mΩ	30 V _{AC} 60 V _{DC}	32 A	- 30 °C ... + 110 °C
FK 82 L / ..(colour) contact part nickel-plated	Ø 2 mm	yellow green	soldering - 0,5 mm ²	3 mΩ	30 V _{AC} 60 V _{DC}	10 A	- 30 °C ... + 110 °C
FK 82 L AU / ..(colour) contact part gold-plated	Ø 2 mm		soldering - 0,5 mm ²	3 mΩ	30 V _{AC} 60 V _{DC}	10 A	- 30 °C ... + 110 °C

other colours and platings on request



Lamella-basket plug

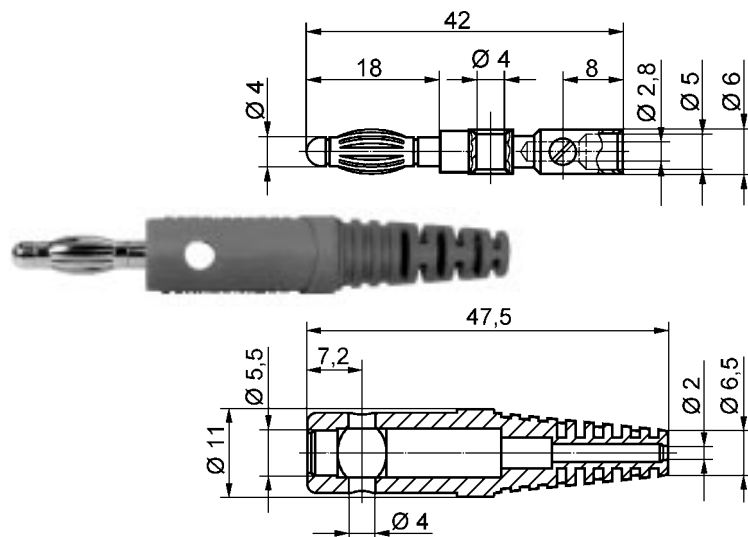
- straight, with screw
- with sleeve, unassembled

order no. FK 8 S / ..(colour)
- contact part **nickel-plated**
- sleeve TPE (Evoprene)
for wire square section up to **2.5 mm²**
for insulation diameter up to **4 mm**

colours : see table

order no. FK 8 S AU / ..(colour)
- as above, but contact parts **gold-plated**

colours : see table



Lamella-basket plug

- straight, with screw
- with sleeve, unassembled

order no. FK 82 S / ..(colour)
- contact part **nickel-plated**
- sleeve TPE (Evoprene)
for wire square section up to **0.5 mm²**
for insulation diameter up to **2 mm**

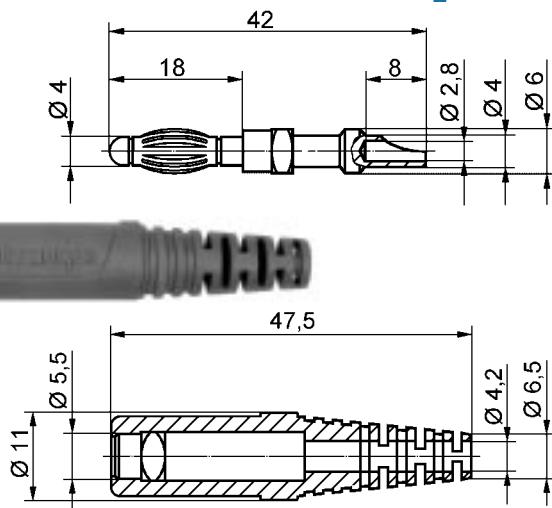
colours : see table

order no. FK 82 S AU / ..(colour)
- as above, but contact parts **gold-plated**

colours : see table

General information			Technical data				
order no.	sleeve for lead	colours	terminal	transition resistance	rated voltage	rated current	operating temperature
FK 8 S / ..(colour) contact part nickel-plated	ø 4 mm		screw - 2.5 mm ²	3 mΩ	30 V _{AC} 60 V _{DC}	32 A	- 30 °C ... + 110 °C
FK 8 S AU / ..(colour) contact part gold-plated	ø 4 mm	black red blue	screw - 2.5 mm ²	3 mΩ	30 V _{AC} 60 V _{DC}	32 A	- 30 °C ... + 110 °C
FK 82 S / ..(colour) contact part nickel-plated	ø 2 mm	yellow green	screw - 0.5 mm ²	3 mΩ	30 V _{AC} 60 V _{DC}	10 A	- 30 °C ... + 110 °C
FK 82 S AU / ..(colour) contact part gold-plated	ø 2 mm		screw - 0.5 mm ²	3 mΩ	30 V _{AC} 60 V _{DC}	10 A	- 30 °C ... + 110 °C

other colours and platings on request



Lamella-basket plug

- straight, with soldering cup
- with sleeve, unassembled

order no. FK 9 L / ..(colour)

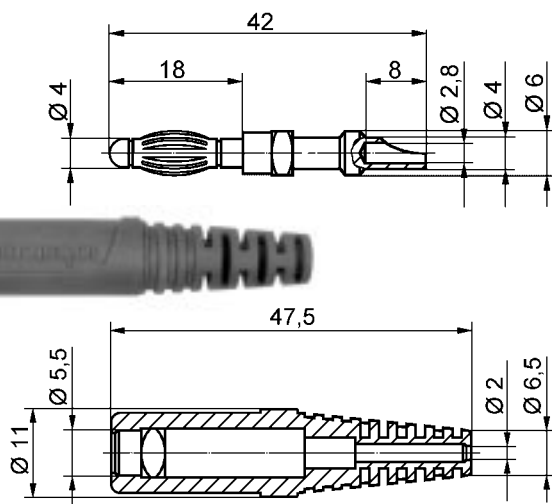
- contact part **nickel-plated**
- sleeve TPE (Evoprene)
- for wire square section up to **2.5 mm²**
- for insulation diameter up to **4 mm**

colours : see table

order no. FK 9 L AU / ..(colour)

- as above, but contact parts **gold-plated**

colours : see table



Lamella-basket plug

- straight, with soldering cup
- with sleeve, unassembled

order no. FK 92 L / ..(colour)

- contact part **nickel-plated**
- sleeve TPE (Evoprene)
- for wire square section up to **0.5 mm²**
- for insulation diameter up to **2 mm**

colours : see table

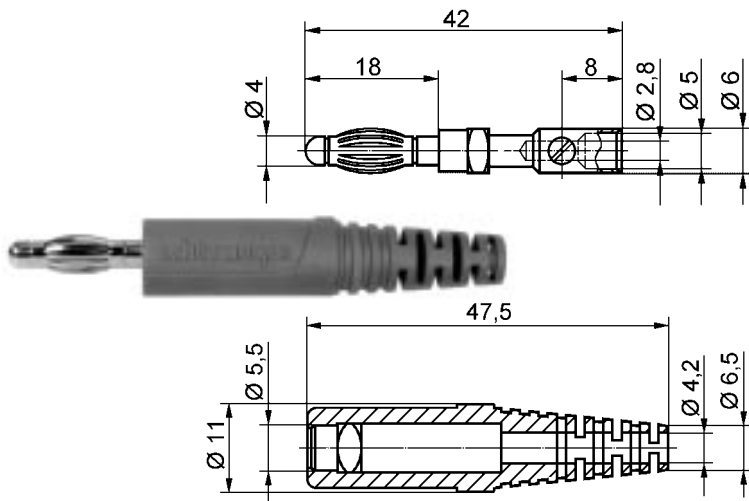
order no. FK 92 L AU / ..(colour)

- as above, but contact parts **gold-plated**

colours : see table

General information			Technical data				
order no.	sleeve for lead	colours	terminal	transition resistance	rated voltage	rated current	operating temperature
FK 9 L / ..(colour) contact parts nickel-plated	ø 4 mm		soldering - 2.5 mm ²	3 mΩ	30 V _{AC} 60 V _{DC}	32 A	- 30 °C ... + 110 °C
FK 9 L AU / ..(colou) contact parts gold-plated	ø 4 mm	black red blue	soldering - 2.5 mm ²	3 mΩ	30 V _{AC} 60 V _{DC}	32 A	- 30 °C ... + 110 °C
FK 92 L / ..(colour) contact parts nickel-plated	ø 2 mm	yellow green	soldering - 0.5 mm ²	3 mΩ	30 V _{AC} 60 V _{DC}	10 A	- 30 °C ... + 110 °C
FK 92 L AU / ..(colou) contact parts gold-plated	ø 2 mm		soldering - 0.5 mm ²	3 mΩ	30 V _{AC} 60 V _{DC}	10A	- 30 °C ... + 110 °C

other colours and platings on request



Lamella-basket plug

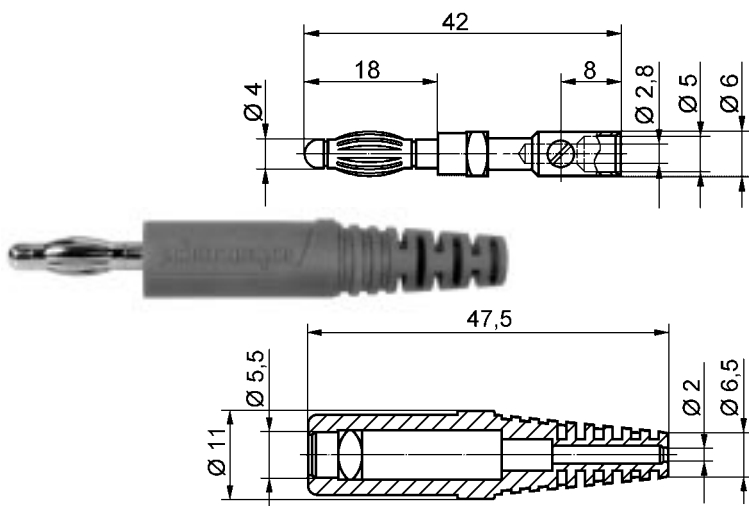
- straight, with screw
- with sleeve, unassembled

order no. FK 9 S / ..(colour)
- contact part **nickel-plated**
- sleeve TPE (Evoprene)
for wire square section up to **2.5 mm²**
for insulation diameter up to **4 mm**

colours : see table

order no. FK 9 S AU / ..(colour)
- as above, but contact parts **gold-plated**

colours : see table



Lamella-basket plug

- straight, with screw
- with sleeve, unassembled

order no. FK 92 S / ..(colour)
- contact part **nickel-plated**
- sleeve TPE (Evoprene)
for wire square section up to **2.5 mm²**
for insulation diameter up to **4 mm**

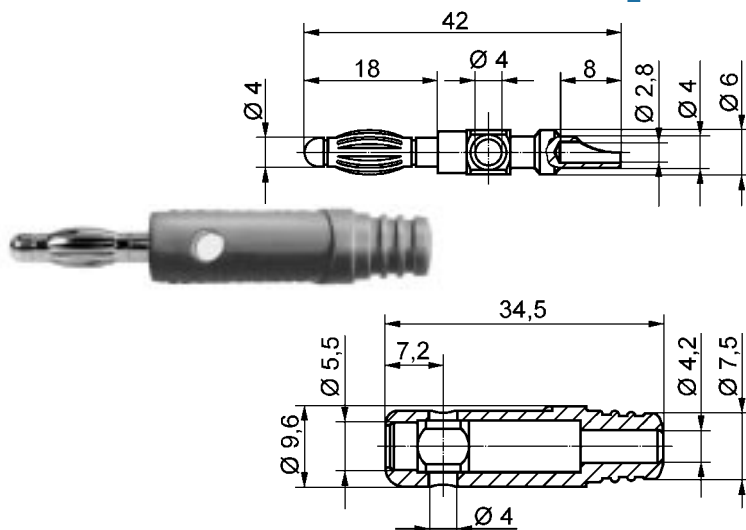
colours : see table

order no. FK 92 S AU / ..(colour)
- as above, but contact parts **gold-plated**

colours : see table

General information			Technical data				
order no.	sleeve for lead	colours	terminal	transition resistance	rated voltage	rated current	operating temperature
FK 9 S / ..(colour) contact parts nickel-plated	ø 4 mm		screw up to 2.5 mm ²	3 mΩ	30 V _{AC} 60 V _{DC}	32 A	- 30 °C ... + 110 °C
FK 9 S AU / ..(colour) contact parts gold-plated	ø 4 mm	black red blue	screw up to 2.5 mm ²	3 mΩ	30 V _{AC} 60 V _{DC}	32 A	- 30 °C ... + 110 °C
FK 92 S / ..(colour) contact parts nickel-plated	ø 2 mm	yellow green	screw up to 0.5 mm ²	3 mΩ	30 V _{AC} 60 V _{DC}	10 A	- 30 °C ... + 110 °C
FK 92 S AU / ..(colour) contact parts gold-plated	ø 2 mm		screw up to 0.5 mm ²	3 mΩ	30 V _{AC} 60 V _{DC}	10 A	- 30 °C ... + 110 °C

other colours and platings on request



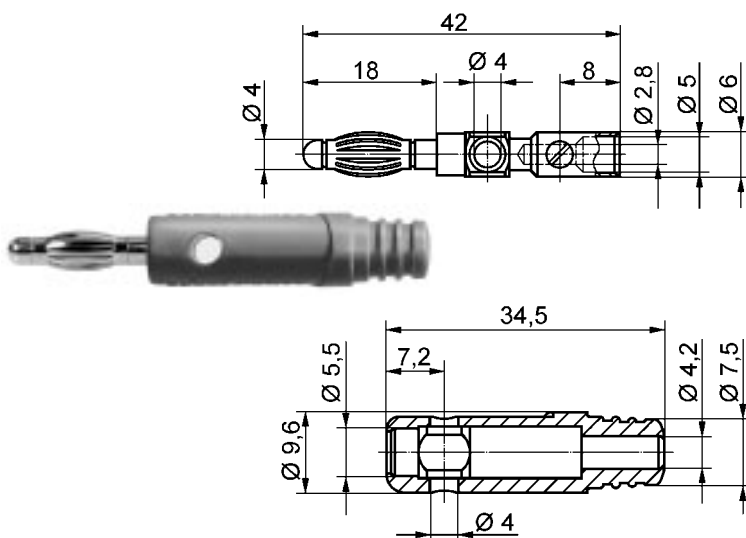
Lamella-basket plug

- straight, with soldering cup
- with sleeve, unassembled

order no. FK 28 L / ..(colour)

- contact part **nickel-plated**
- sleeve TPE (Evoprene)
- for wire square section up to **2.5 mm²**
- for insulation diameter up to **4 mm**

colours : see table



Lamella-basket plug

- straight, with screw
- with sleeve, unassembled

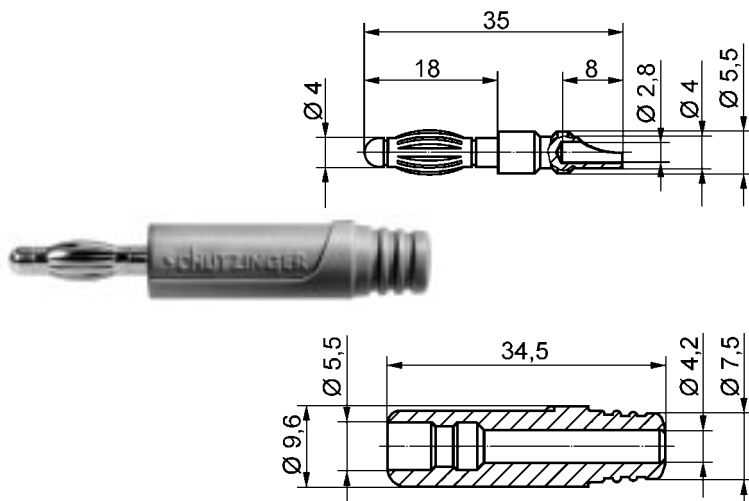
order no. FK 28 S / ..(colour)

- contact part **nickel-plated**
- sleeve TPE (Evoprene)
- for wire square section up to **2.5 mm²**
- for insulation diameter up to **4 mm**

colours : see table

General information			Technical data				
order no.	sleeve for lead	colours	terminal	transition resistance	rated voltage	rated current	operating temperature
FK 28 L / ..(colour) contact parts nickel-plated	Ø 4 mm	black red	soldering - 2.5 mm ²	3 mΩ	30 V _{AC} 60 V _{DC}	32 A	- 30 °C ... + 110 °C
FK 28 S / ..(colour) contact parts nickel-plated	Ø 4 mm	black red	screw - 2.5 mm ²	3 mΩ	30 V _{AC} 60 V _{DC}	32 A	- 30 °C ... + 110 °C

other colours and platings on request



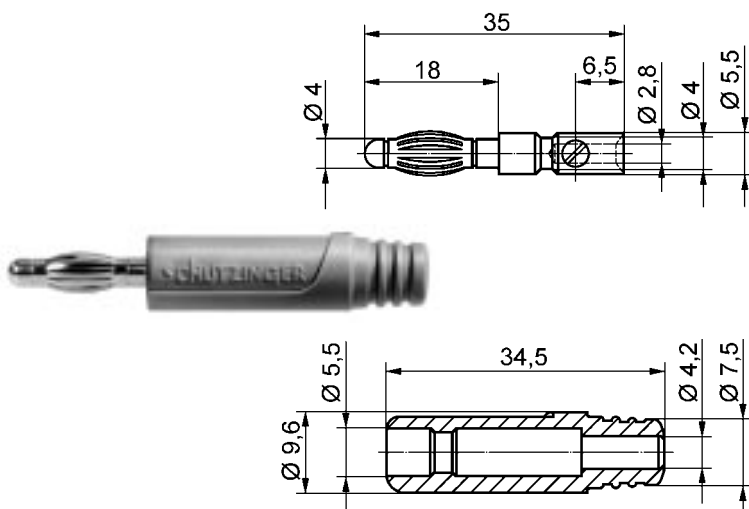
Lamella-basket plug

- straight, with soldering cup
- with sleeve, unassembled

order no. FK 29 L / ..(colour)

- contact part **nickel-plated**
- sleeve TPE (Evoprene)
- for wire square section up to **2.5 mm²**
- for insulation diameter up to **4 mm**

colours : see table



Lamella-basket plug

- straight, with screw
- with sleeve, unassembled

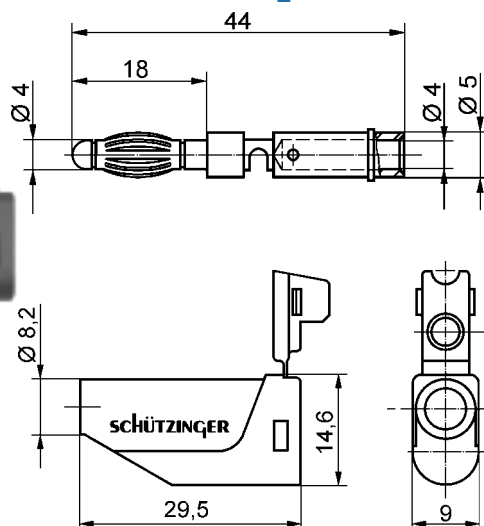
order no. FK 29 S / ..(colour)

- contact part **nickel-plated**
- sleeve TPE (Evoprene)
- for wire square section up to **2.5 mm²**
- for insulation diameter up to **4 mm**

colours : see table

General information			Technical data				
order no.	sleeve for lead	colours	terminal	transition resistance	rated voltage	rated current	operating temperature
FK 29 L / ..(colour) contact parts nickel-plated	ø 4 mm	black red	soldering - 2.5 mm ²	3 mΩ	30 V _{AC} 60 V _{DC}	32 A	- 30 °C ... + 110 °C
FK 29 S / ..(colour) contact parts nickel-plated	ø 4 mm	black red	screw - 2.5 mm ²	3 mΩ	30 V _{AC} 60 V _{DC}	32 A	- 30 °C ... + 110 °C

other colours and platings on request

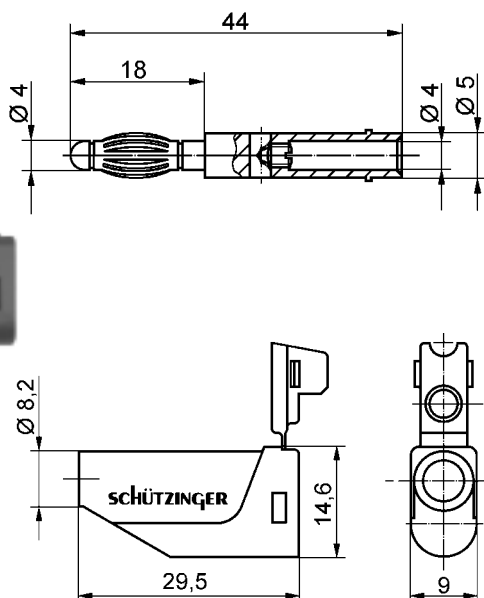


Lamella-basket plug

- soldering terminal
- with line in socket
- with sleeve, unassembled

order no. FK 15 L / 1 / ..(colour)
 - contact parts **nickel-plated**
 - sleeve PE (Hostalen)
 for wire square-section up to **1 mm²**
 for insulation diameter up to **4 mm**

colours: see table



Lamella-basket plug

- screw terminal
- with line in socket
- with sleeve, unassembled

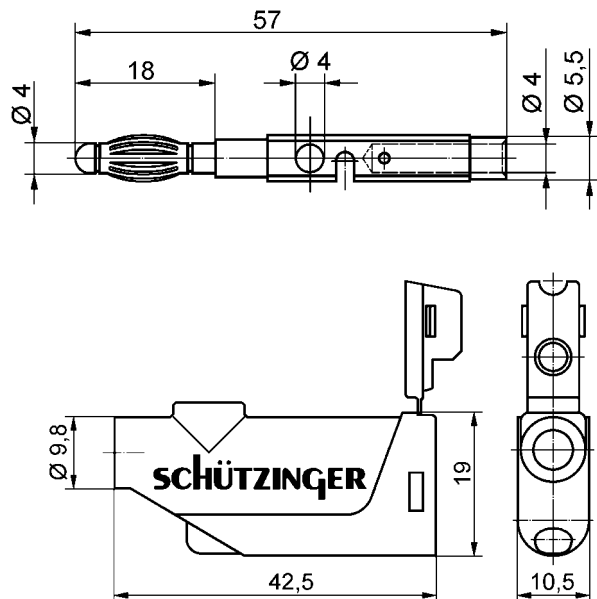
order no. FK 15 S / 1 / ..(colour)
 - contact parts **nickel-plated**
 - sleeve PE (Hostalen)
 for wire square section up to **1 mm²**
 for insulation diameter up to **4 mm**

order no. FK 15 S / 0,5 / ..(colour)
 - as above, but
 - sleeve PE (Hostalen)
 for wire square section up to **0.5 mm²**
 for insulation diameter up to **2 mm**

colours: see table

General information			Technical data				
order no.	sleeve for lead	colours	terminal	transition resistance	rated voltage	rated current	operating temperature
FK 15 L / 1 / ..(colour) contact part nickel-plated	Ø 4 mm	black red	soldering - 1 mm ²	3 mΩ	30 V _{AC} 60 V _{DC}	16 A	- 25 °C ... + 110 °C
FK 15 S / 1 / ..(colour) contact part nickel-plated	Ø 4 mm	blue yellow green	screw - 1 mm ²	3 mΩ	30 V _{AC} 60 V _{DC}	16 A	- 25 °C ... + 110 °C
FK 15 S / 0,5 / ..(colour) contact part nickel-plated	Ø 2 mm		screw - 0.5 mm ²	3 mΩ	30 V _{AC} 60 V _{DC}	10 A	- 25 °C ... + 110 °C

other colours and platings on request

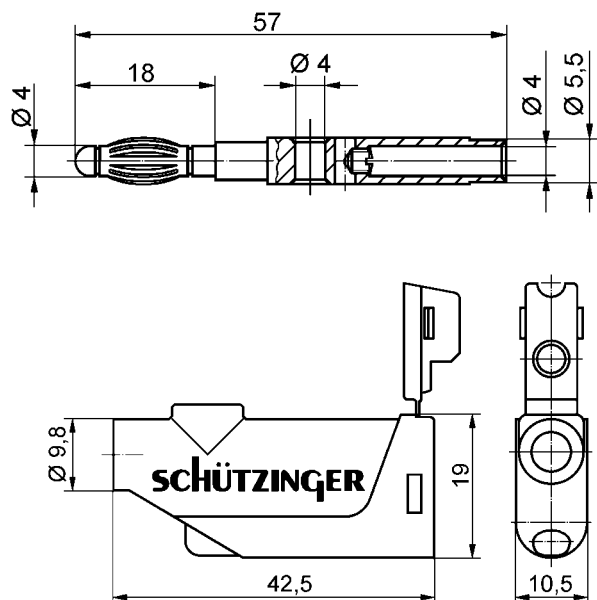


Lamella-basket plug

- soldering terminal
- with line in and parallel socket
- with sleeve, unassembled

order no. FK 20 L / 1 / ..(colour)
- contact parts **nickel-plated**
- sleeve PE (Hostalen)
for wire square section up to **1 mm²**
for insulation diameter up to **4 mm**

colours: see table



Lamella-basket plug

- screw terminal
- with line in and parallel socket
- with sleeve, unassembled

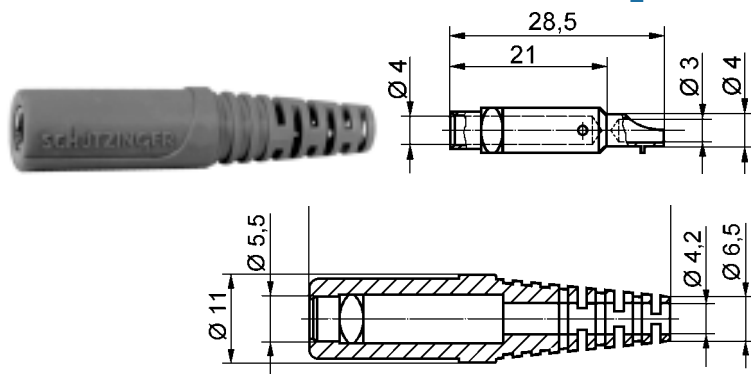
order no. FK 20 S / 1 / ..(colour)
- contact parts **nickel-plated**
- sleeve PE (Hostalen)
for wire square section up to **1 mm²**
for insulation diameter up to **4 mm**

colours: see table



General information			Technical data				
order no.	sleeve for lead	colours	terminal	transition resistance	rated voltage	rated current	operating temperature
FK 20 L / 1 / ..(colour) contact part nickel-plated	ø 4 mm	black red blue	soldering - 1 mm ²	3 mΩ	30 V _{AC} 60 V _{DC}	16 A	- 25 °C ... + 110 °C
FK 20 S / 1 / ..(colour) contact part nickel-plated	ø 4 mm	yellow green	screw - 1 mm ²	3 mΩ	30 V _{AC} 60 V _{DC}	16 A	- 25 °C ... + 110 °C

other colours and platings on request

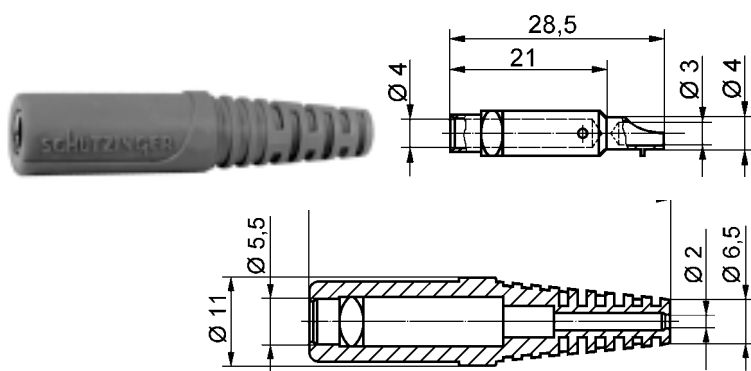


Coupler

- soldering cup
- with sleeve, unassembled

order no. KU 09 L / ..(colour)
 - contact part **nickel-plated**
 - sleeve TPE (Evoprene)
 for wire square section up to **2.5 mm²**
 for insulation diameter up to **4 mm**

colours: see table

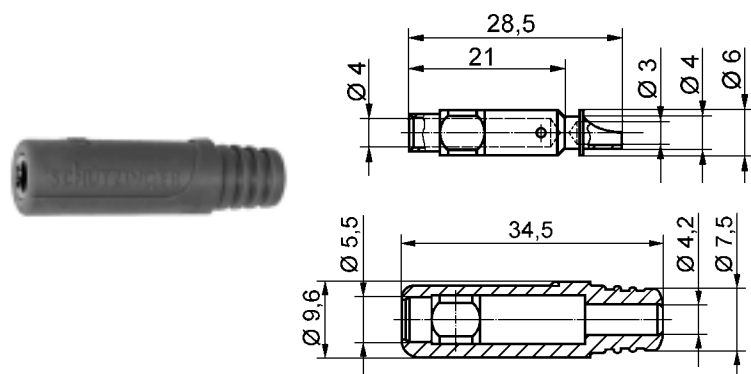


Coupler

- soldering cup
- with sleeve, unassembled

order no. KU 92 L / ..(colour)
 - contact part **nickel-plated**
 - sleeve TPE (Evoprene)
 for wire square section up to **0.5 mm²**
 for insulation diameter up to **2 mm**

colours: see table



Coupler

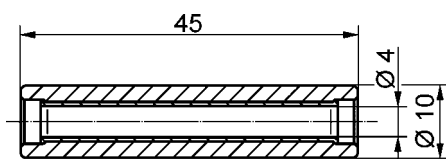
- soldering cup
- with sleeve, unassembled

order no. KU 32 L / ..(colour)
 - contact part **nickel-plated**
 - sleeve TPE (Evoprene)
 for wire square-section up to **2.5 mm²**
 for insulation diameter up to **4 mm**

colours: see table

General information			Technical data				
order no.	sleeve for lead	colours	terminal	transition resistance	rated voltage	rated current	operating temperature
KU 09 L / ..(colour) contact part nickel-plated	ø 4 mm	black red blue	soldering - 2.5 mm ²	3 mΩ	30 V _{AC} 60 V _{DC}	32 A	- 30 °C ... + 110 °C
KU 92 L / ..(colour) contact part nickel-plated	ø 2 mm	yellow green	soldering - 0.5 mm ²	3 mΩ	30 V _{AC} 60 V _{DC}	10 A	- 30 °C ... + 110 °C
KU 32 L / ..(colour) contact part nickel-plated	ø 4 mm	black red	soldering - 2.5 mm ²	3 mΩ	30 V _{AC} 60 V _{DC}	32 A	- 30 °C ... + 110 °C

other colours and platings on request



Coupler

- 2 in-line sockets
- with insulation

order no. KU 320 / ..(colour)

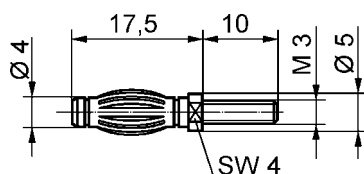
- contact part **brass**
- insulation **Polystyrol**

colours: see table

General information		Technical data				
order no.	colours	terminal	transition resistance	rated voltage	rated current	operating temperature
KU 320 / ..(colour) contact part brass	black red	2 x socket	3 mΩ	30 V _{AC} 60 V _{DC}	32 A	- 10 °C ... + 70 °C



Ø 4



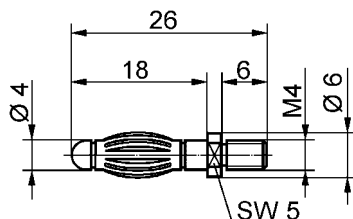
Lamella-basket plug with thread

- for keys with SW 4
- thread M3 x 10

order no. FK 1199

- contact part

nickel-plated



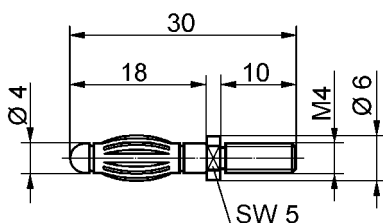
Lamella-basket plug with thread

- for keys with SW 5
- thread M4 x 6

order no. FK 1209

- contact part

nickel-plated



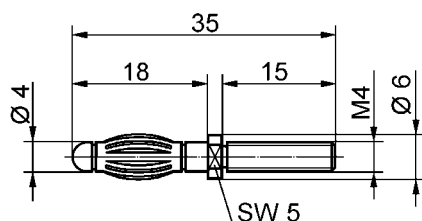
Lamella-basket plug with thread

- for keys with SW 5
- thread M4 x 10

order no. FK 1210

- contact part

nickel-plated



Lamella-basket plug with thread

- for keys with SW 5
- thread M4 x 15

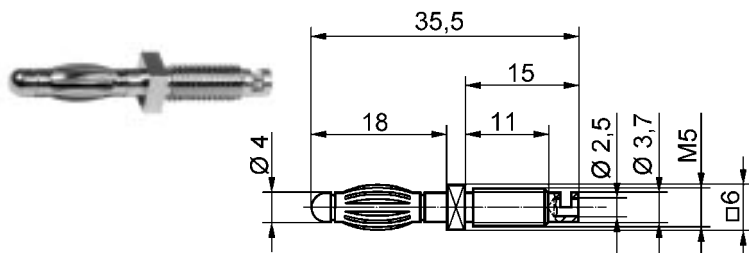
order no. FK 1211

- contact part

nickel-plated

General information		Technical data				
order no.	thread	terminal	transition resistance	rated voltage	rated current	operating temperature
FK 1199 contact part nickel-plated	M3 x 10	—	< 3 mΩ	30 V _{AC} 60 V _{DC}	32 A	- 40 °C ... + 110 °C
FK 1209 contact part nickel-plated	M4 x 6	—	< 3 mΩ	30 V _{AC} 60 V _{DC}	32 A	- 40 °C ... + 110 °C
FK 1210 contact part nickel-plated	M4 x 10	—	< 3 mΩ	30 V _{AC} 60 V _{DC}	32 A	- 40 °C ... + 110 °C
FK 1211 contact part nickel-plated	M4 x 15	—	< 3 mΩ	30 V _{AC} 60 V _{DC}	32 A	- 40 °C ... + 110 °C

other types and platings on request



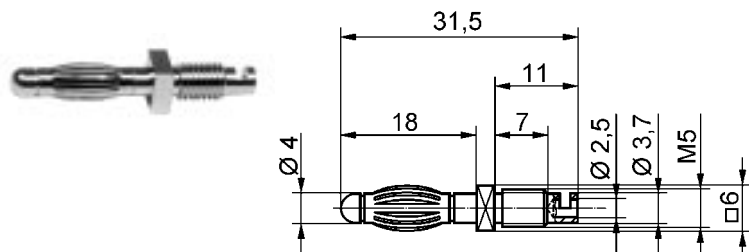
Lamella-basket plug with thread

- square for keys with SW 6
- thread M5 x 11
- soldering terminal for leads up to 2.5 mm²

order no. FK 1212

- contact part

nickel-plated



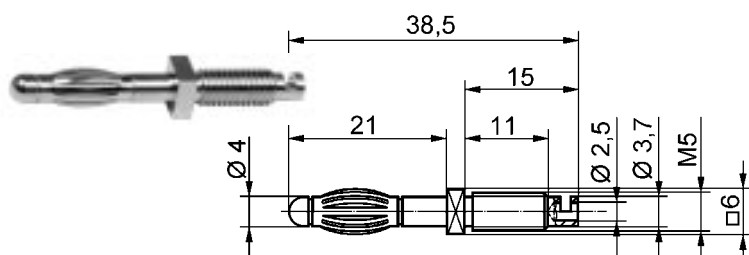
Lamella-basket plug with thread

- square for keys with SW 6
- thread M5 x 7
- soldering terminal for leads up to 2.5 mm²

order no. FK 1215

- contact part

nickel-plated



Lamella-basket plug with thread

- square for keys with SW 6
- thread M5 x 11
- soldering terminal for leads up to 2.5 mm²

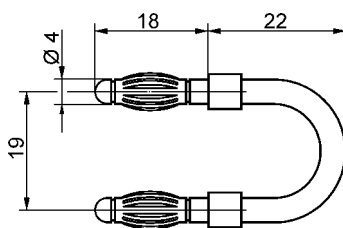
order no. FK 1386

- contact part

nickel-plated

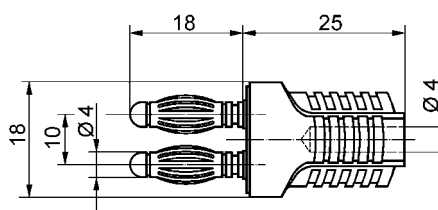
General information		Technical data				
order no.	thread	terminal				
			transition resistance	rated voltage	rated current	operating temperature
FK 1212 contact part nickel-plated	M5 x 11	soldering - 2.5 mm ²	< 3 mΩ	30 V _{AC} 60 V _{DC}	32 A	- 40 °C ... + 110 °C
FK 1215 contact part nickel-plated	M5 x 7	soldering - 2.5 mm ²	< 3 mΩ	30 V _{AC} 60 V _{DC}	32 A	- 40 °C ... + 110 °C
FK 1386 contact part nickel-plated	M5 x 11	soldering - 2.5 mm ²	< 3 mΩ	30 V _{AC} 60 V _{DC}	32 A	- 40 °C ... + 110 °C

other types and platings on request



Connecting plug
- without insulation

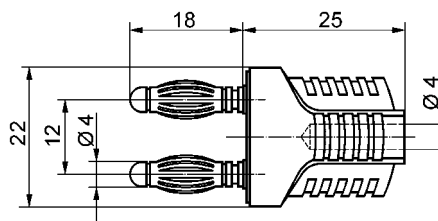
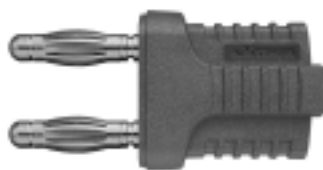
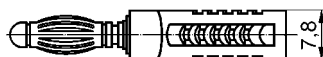
order no. KURZ 19 - 4
- contact part **nickel-plated**



Connecting plug
- moulded insulation
- with rear socket Ø 4 mm

order no. KURZ 10 - 4 IG MB / .. (colour)
- contact part **nickel-plated**
- insulation PA 6 (Polyamid)

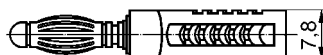
colours: see table



Connecting plug
- moulded insulation

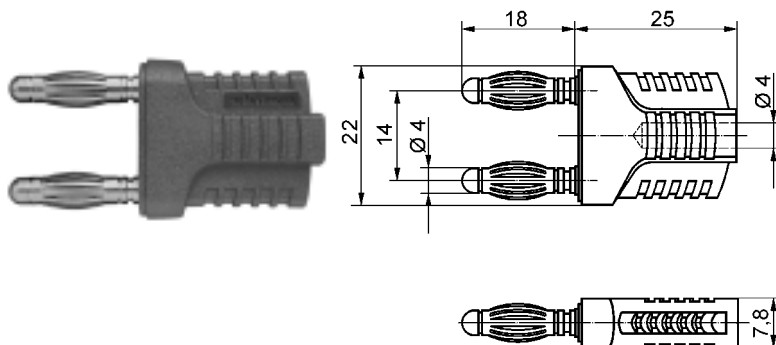
order no. KURZ 12 - 4 IG MB / .. (colour)
- contact part **nickel-plated**
- insulation PA 6 (Polyamid)

colours: see table



General information		Technical data				
order no.	colours	terminal				
			transition resistance	rated voltage	rated current	operating temperature
KURZ 19 - 4 contact part nickel-plated	—	—	3 mΩ	30 V _{AC} 60 V _{DC}	32 A	- 40°C... +110°C
KURZ 10 - 4 IG MB / ..(colour) contact part nickel-plated	black	rear-socket	3 mΩ	30 V _{AC} 60 V _{DC}	32 A	- 25°C... +110°C
KURZ 12 - 4 IG MB / ..(colour) contact part nickel-plated	black	rear-socket	3 mΩ	30 V _{AC} 60 V _{DC}	32 A	- 25°C... +110°C

other colours and platings on request

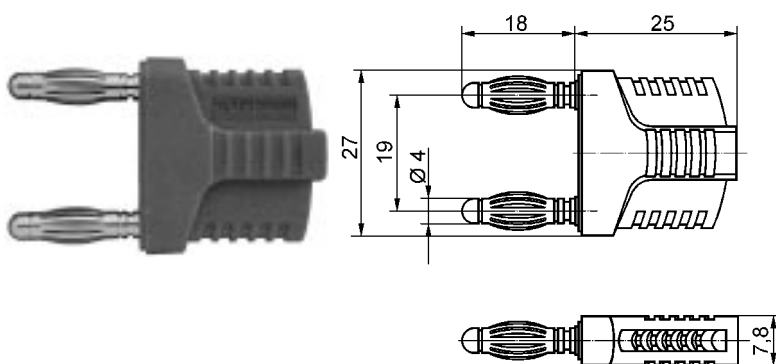


Connecting plug

- moulded insulation
- with rear socket ø 4 mm

order no. KURZ 14 - 4 IG MB / .. (colour)
- contact part **nickel-plated**
- insulation PA 6 (Polyamid)

colours: see table

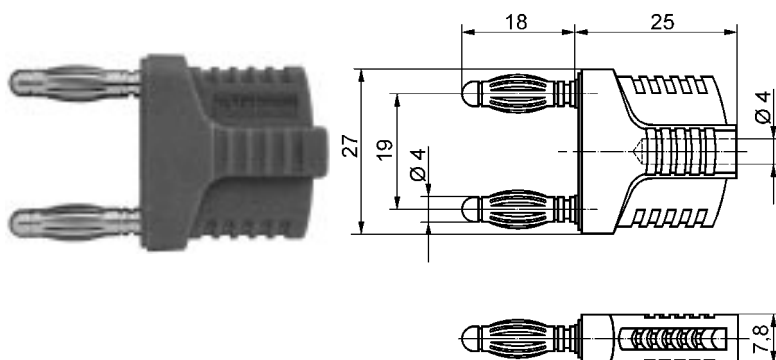


Connecting plug

- moulded insulation

order no. KURZ 19 - 4 IG / .. (colour)
- contact part **nickel-plated**
- insulation PA 6 (Polyamid)

colours: see table



Connecting plug

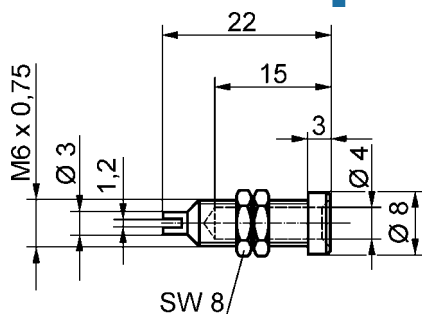
- moulded insulation
- with rear socket ø 4 mm

order no. KURZ 19 - 4 IG MB / .. (colour)
- contact part **nickel-plated**
- insulation PA 6 (Polyamid)

colours: see table

General information		Technical data				
order no.	colours	terminal	transition resistance	rated voltage	rated current	operating temperature
KURZ 14 - 4 IG MB / ..(colour) contact part nickel-plated	black	rear-socket	3 mΩ	30 V _{AC} 60 V _{DC}	32 A	- 25°C... +110°C
KURZ 19 - 4 IG / ..(colour) contact part nickel-plated	black	—	3 mΩ	30 V _{AC} 60 V _{DC}	32 A	- 25°C... +110°C
KURZ 19 - 4 IG MB / ..(colour) contact part nickel-plated	black red / white	rear-socket	3 mΩ	30 V _{AC} 60 V _{DC}	32 A	- 25°C... +110°C

other colours and platings on request



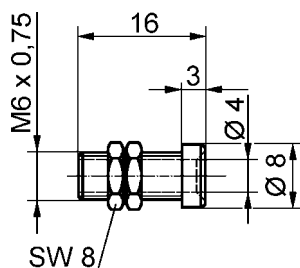
Socket

- not insulated
- hole \varnothing 6.1 mm

order no. BU 404

- contact part material
- contact part

brass
nickel-plated



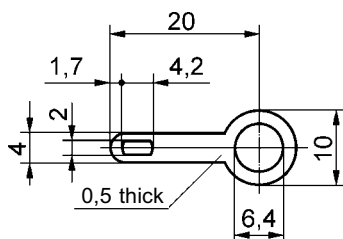
Socket

- not insulated
- hole \varnothing 6.1 mm

order no. BU 405

- contact part material
- contact part

brass
nickel-plated



Soldering loop

- fits sockets IBU 401 / .. (colour), IBU 403 / .. (colour), BU 404, BU 405

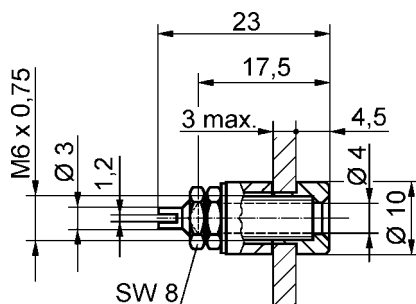
order no. LÖ 6,4 x 20

- contact part material
- plating

brass
tin-plating

General information			Technical data				
order no.	max. torque for nuts	colours	terminal	transition resistance	rated voltage	rated current	operating temperature
BU 404 contact part nickel-plated	300 Ncm	—	soldering or soldering loop	< 10 m Ω	30 V _{AC} 60 V _{DC}	32 A	- 40 °C ... + 110 °C
BU 405 contact part nickel-plated	300 Ncm	—	soldering or soldering loop	<10 m Ω	30 V _{AC} 60 V _{DC}	32 A	- 40 °C ... + 110 °C
LÖ 6,4 x 20 tin-plated			soldering				

other types and platings on request

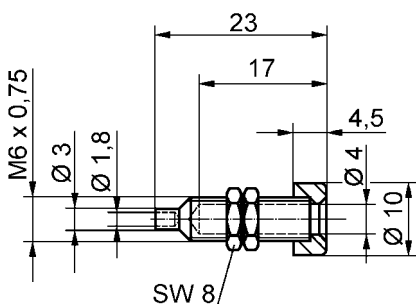


Socket

- fully insulated fitting
- insulated head screwed on
- hole ø 7.5 mm

order no. IBU 401 / .. (colour)
 - contact part material brass
 - contact part **nickel-plated**
 - insulation PA 6 (Polyamid)

colours: see table

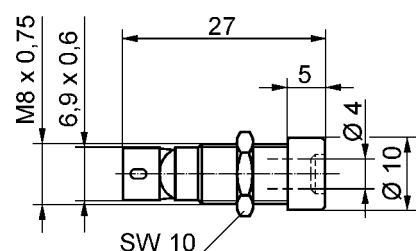


Socket

- insulated head screwed on
- hole ø 6.1 mm

order no. IBU 403 / .. (colour)
 - contact part material brass
 - contact part **nickel-plated**
 - insulation PA 6 (Polyamid)

colours: see table



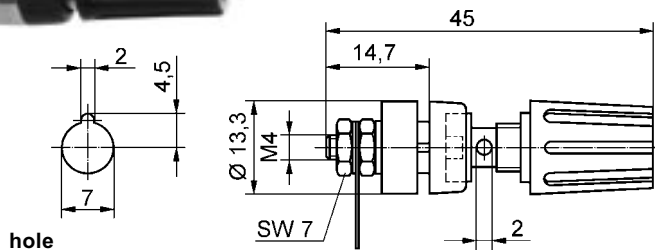
Socket

- insulated
- hole ø 8 mm

order no. IBU 9213 / .. (colour)
 - contact part material rolled brass sheet
 - contact part **tin-plated**
 - insulation ABS

General information			Technical data				
order no.	max. torque for nuts	colours	terminal	transition resistance	rated voltage	rated current	operating temperature
IBU 401 / .. (colour) contact part nickel-plated	300 Ncm	black, red, blue, yellow, green, white	soldering, solder loop	< 10 mΩ	30 V _{AC} 60 V _{DC}	32 A	- 25 °C ... + 80 °C
IBU 403 / .. (colour) contact part nickel-plated	300 Ncm	black, red, blue, yellow, green, white	soldering, solder loop	< 10 mΩ	30 V _{AC} 60 V _{DC}	32 A	- 25 °C ... + 80 °C
IBU 9213 / .. (colour) contact part tin-plated	100 Ncm	black red	soldering, cable lug	< 10 mΩ	30 V _{AC} 60 V _{DC}	16 A	- 30 °C ... + 90 °C

other types and platings on request



Terminal post

- with undetachable head

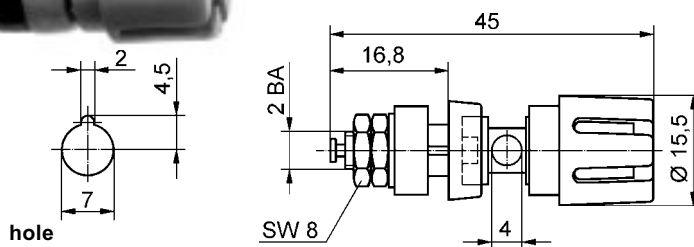
order no. POL 1989 / .. (colour)

- contact parts
- insulation

nickel-plated
PA 6.6 (Polyamid)

colours:

see table



Terminal post

- with undetachable head

order no. POL 1994 / .. (colour)

- contact parts
- insulation

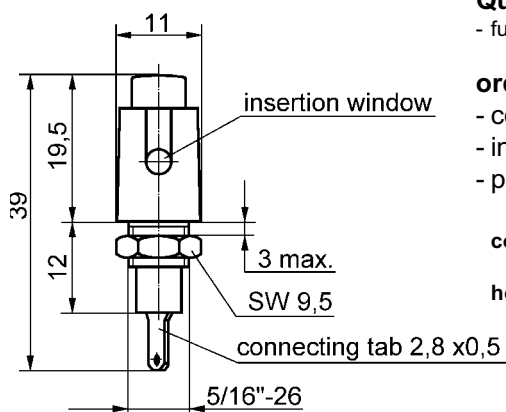
nickel-plated
PA 6.6 (Polyamid)

colours:

see table

General information			Technical data				
order no.	max. torque for nuts	colours	terminal	transition resistance	rated voltage	rated current	operating temperature
POL 1989 / .. (colour) contact parts nickel-plated	100 Ncm	black red	soldering, soldering loop	< 2 mΩ	30 V _{AC} 60 V _{DC}	16 A	- 25 °C ... + 80 °C
POL 1994 / .. (colour) contact parts nickel-plated	200 Ncm	black red		< 2 mΩ	30 V _{AC} 60 V _{DC}	25 A	- 25 °C ... + 80 °C

other types on request



Quick-release terminal

- fully insulated

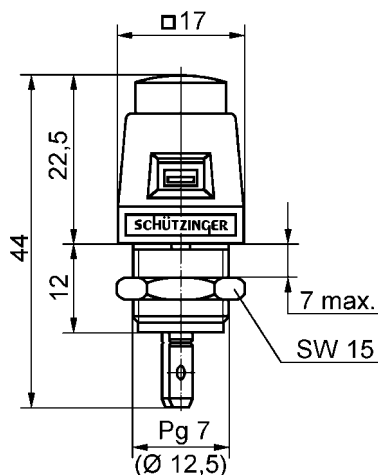
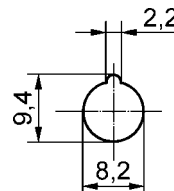
order no. L 1757 / .. (colour)

- contact parts **nickel-plated**
- insulation PP (Polypropylen)
- panel thickness 0.8 mm - 3 mm

colours:

see table

hole



Quick-release terminal

- fully insulated

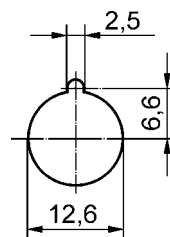
order no. ESD 498 / .. (colour)

- contact parts **nickel-plated**
- insulation PA 6.6 (Polyamid)
- panel thickness 0.8 mm - 7 mm

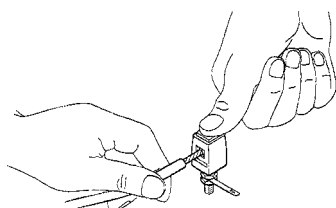
colours:

see table

hole



front insertion window 6.5 mm x 4 mm
rear insertion window 8.0 mm x 4 mm



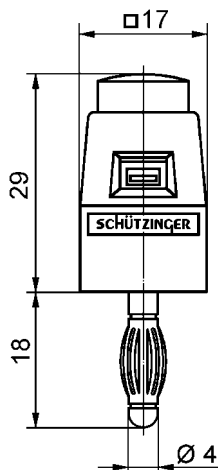
Functional description:

Wires and strands are connected between the spring jaws by pressing on the head of the terminal post.

Every quick-release terminal has an insertion window. The window size is approx. 8 mm x 4 mm. A strong compression spring guarantees good contact. The pressure of the compression spring amounts to approx. 19 N. The quick-release terminals are particularly suitable for quick connection and testing of series appliances.

General information			Technical data				
order no.	max. torque for nuts	colours	terminal	transition resistance	rated voltage	rated current	operating temperature
L 1757 / ..(colour) contact parts nickel-plated	85 Ncm	black red	FSH 2,8x0,5 or soldering	< 3 mΩ	30 V _{AC} 60 V _{DC}	5 A	- 25 °C ... + 70 °C
ESD 498 / ..(colour) contact parts nickel-plated	120 Ncm	black red	FSH 6,3x0,8 or soldering	< 3 mΩ	30 V _{AC} 60 V _{DC}	16 A	- 25 °C ... + 90 °C

other colours and compression springs for ESD 498 / .. (colour) on request



Quick-release terminal

- to plug in a 4 mm socket

order no. SDK 502 / .. (colour)

- contact parts

nickel-plated

- insulation

PA 6.6 (Polyamid)

colours:

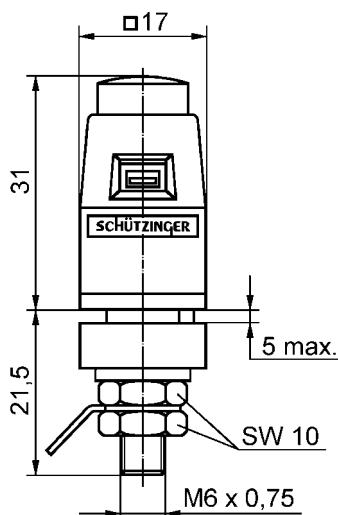
see table

front insertion window

6.5 mm x 4 mm

rear insertion window

8.0 mm x 4 mm



Quick-release terminal

- fully insulated for metal panels

order no. SDK 503 / .. (colour)

- contact parts

nickel-plated

- insulation

PA 6.6 (Polyamid)

- panel thickness

0.8 mm - 7 mm

colours:

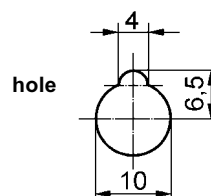
see table

front insertion window

6.5 mm x 4 mm

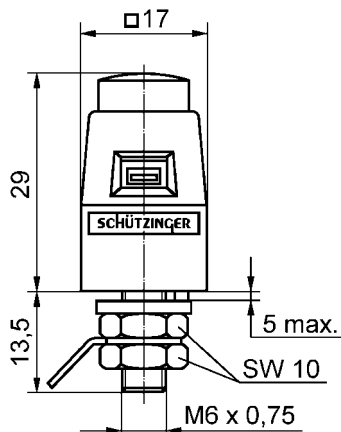
rear insertion window

8.0 mm x 4 mm



General information			Technical data				
order no.	max. torque for nuts	colours	terminal	transition resistance	rated voltage	rated current	operating temperature
SDK 502 / ..(colour) contact parts nickel-plated	—	black red	plug	< 3 mΩ	30 V _{AC} 60 V _{DC}	16 A	- 25 °C ... + 90 °C
SDK 503 / ..(colour) contact parts nickel-plated	120 Ncm	black red	soldering loop cable lug	< 3 mΩ	30 V _{AC} 60 V _{DC}	16 A	- 25 °C ... + 90 °C

other colours and compression springs on request



front insertion window 6.5 mm x 4 mm
rear insertion window 8.0 mm x 4 mm

Quick-release-terminal

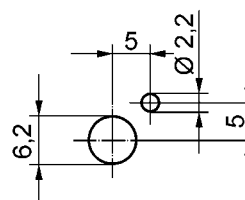
- fully insulated

order no. SDK 504 / .. (colour)

- contact parts **nickel-plated**
- insulation PA 6.6 (Polyamid)
- panel thickness 0.8 mm - 7 mm

colours: see table

hole

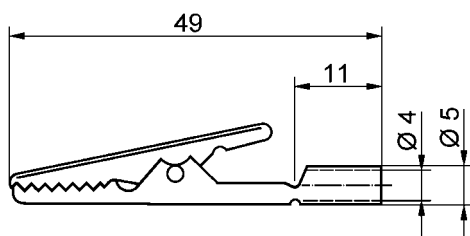


Crocodile clip

- un-insulated
- socket terminal ø 4 mm

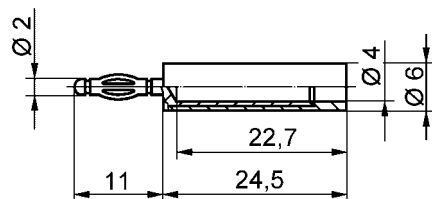
order no. AK 305

- contact parts material **steel**
- contact parts **nickel-plated**
- grips up to ø 8 mm



General information			Technical data				
order no.	max. torque for nuts	colours	terminal	transition resistance	rated voltage	rated current	operating temperature
SDK 504 / ..(colour) contact parts nickel-plated	120 Ncm	black red	soldering loop or cable lug	< 3 mΩ	30 V _{AC} 60 V _{DC}	5 A	- 25 °C ... + 90 °C
AK 305 contact parts nickel-plated	—	—	socket	< 100 mΩ	30 V _{AC} 60 V _{DC}	16 A	- 40 °C ... + 110 °C

other colours and compression springs for SDK 504 / .. (colour) on request



Adapter

- for connecting Ø 2 mm system to Ø 4 mm safety system

order no. A 20 - 40 S / ..(colour)

- contact part

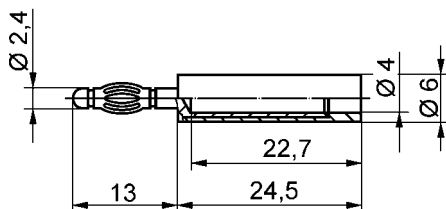
nickel-plated

- insulation

PA 6.6 (Polyamid)

colours:

see table



Adapter

- for connecting Ø 2.4 mm system to Ø 4 mm safety system

order no. A 24 - 40 S / ..(colour)

- contact part

nickel-plated

- insulation

PA 6.6 (Polyamid)

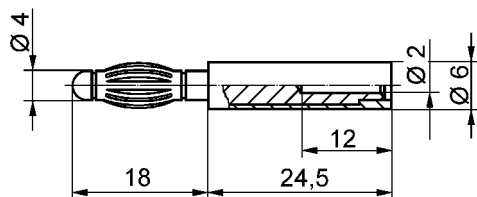
colours:

see table

Ø 4

General information		Technical data				
order no.	colours	terminal	transition resistance	rated voltage	rated current	operating temperature
A 20 - 40 / .. (colour) contact parts nickel-plated	black red	socket	6 mΩ	30 V _{AC} 60 V _{DC}	10 A	- 25 °C ... + 90 °C
A 24 - 40 / .. (colour) contact parts nickel-plated	black red	socket	6 mΩ	30 V _{AC} 60 V _{DC}	10 A	- 25 °C ... + 90 °C

other colours and platings on request



Adapter

- for connecting ø 4 mm - system to ø 2 mm - system

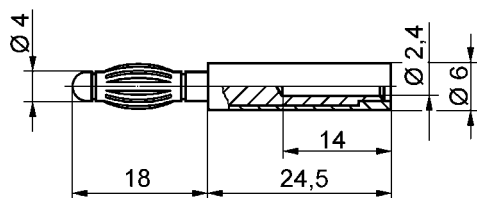
order no. A 40 - 20 / ..(colour)

- contact part
- insulation

nickel-plated
PA 6.6 (Polyamid)

colours:

see table



Adapter

- for connecting ø 4 mm - system to ø 2.4 mm - system

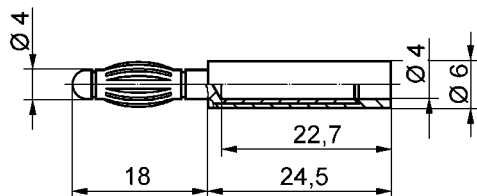
order no. A 40 - 24 / ..(colour)

- contact part
- insulation

nickel-plated
PA 6.6 (Polyamid)

colours:

see table



Adapter

- for connecting ø 4 mm - system to ø 4 mm safety - system

order no. A 40 - 40 S / ..(colour)

- contact part
- insulation

nickel-plated
PA 6.6 (Polyamid)

colours:

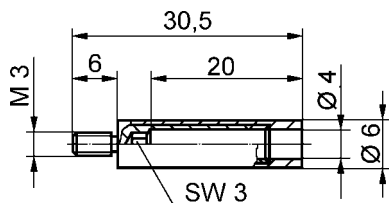
see table

General information		Technical data				
order no.	colours	terminal	transition resistance	rated voltage	rated current	operating temperature
A 40 - 20 / .. (colour) contact parts nickel-plated	black red	socket	6 mΩ	30 V _{AC} 60 V _{DC}	10 A	- 25 °C ... + 90 °C
A 40 - 24 / .. (colour) contact parts nickel-plated	black red	socket	6 mΩ	30 V _{AC} 60 V _{DC}	10 A	- 25 °C ... + 90 °C
A 40 - 40 S / .. (colour) contact parts nickel-plated	black red	socket	6 mΩ	30 V _{AC} 60 V _{DC}	10 A	- 25 °C ... + 90 °C

other colours and platings on request

Socket

- to facilitate assembly there is a hexagon at the bottom of the socket for a 3 mm Allen key. The Allen key can be used to counterhold when tightening the socket.
- safety plugs with rigid sleeve can be used.



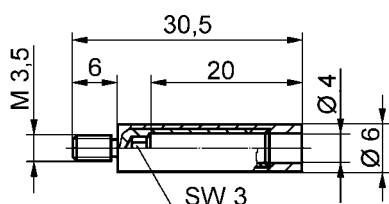
order no. BU 2240 S / .. (colour)

- contact part material brass
- contact part **nickel-plated**
- insulation PA 6.6 (Polyamid)

colours: see table

Socket

- to facilitate assembly there is a hexagon at the bottom of the socket for a 3 mm Allen key. The Allen key can be used to counterhold when tightening the socket.
- safety plugs with rigid sleeve can be used.



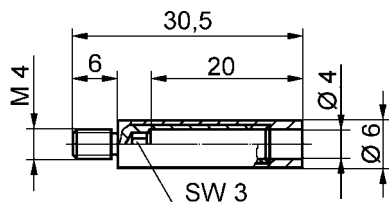
order no. BU 2242 S / .. (colour)

- contact part material brass
- contact part **nickel-plated**
- insulation PA 6.6 (Polyamid)

colours: see table

Socket

- to facilitate assembly there is a hexagon at the bottom of the socket for a 3 mm Allen key. The Allen key can be used to counterhold when tightening the socket.
- safety plugs with rigid sleeve can be used.



order no. BU 2244 S / .. (colour)

- contact part material brass
- contact part **nickel-plated**
- insulation PA 6.6 (Polyamid)

colours: see table

General information			Technical data				
order no.	max. torque	colours	terminal	transition resistance	rated voltage	rated current	operating temperature
BU 2240 S / .. (colour) contact part nickel-plated	80 Ncm	M3 x 6		<10 mΩ	30 V _{AC} * 60 V _{DC} *	32 A	- 25 °C ... + 90 °C
BU 2242 S / .. (colour) contact part nickel-plated	85 Ncm	M3,5 x 6	black red blue	<10 mΩ	30 V _{AC} * 60 V _{DC} *	32 A	- 25 °C ... + 90 °C
BU 2244 S / .. (colour) contact part nickel-plated	100 Ncm	M4 x 6		<10 mΩ	30 V _{AC} * 60 V _{DC} *	32 A	- 25 °C ... + 90 °C

* depending on assembly up to 900 V, CAT II, degree of contamination II

other colours and platings on request



Notes



Notes

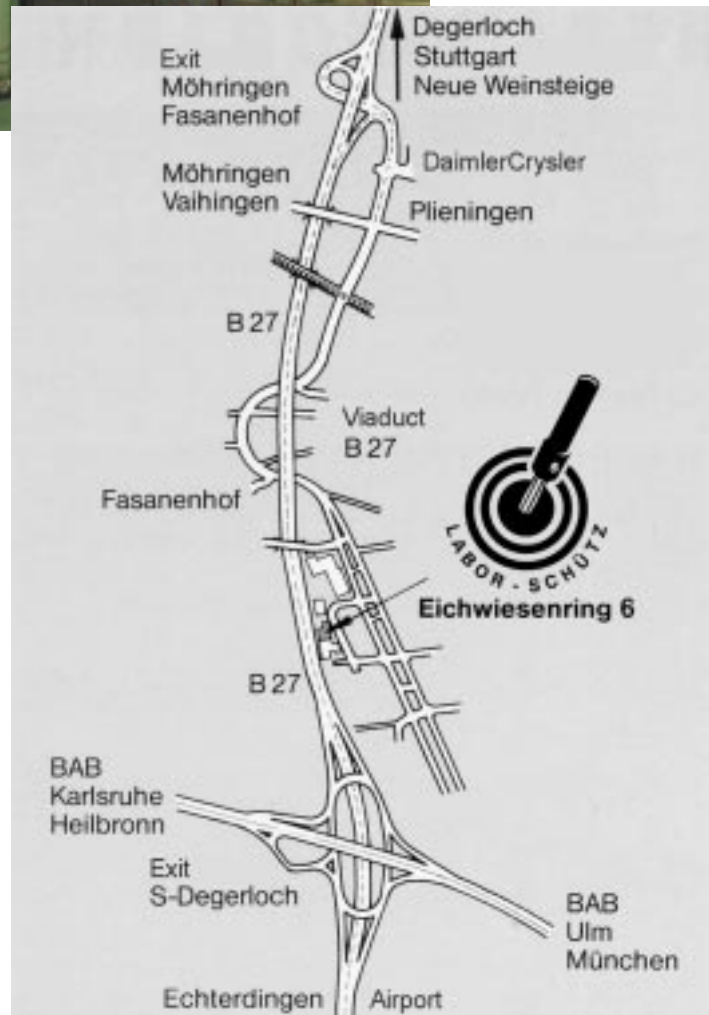
Labor - Schütz GmbH

Labor - Schütz GmbH

83



SCHÜTZINGER – to be sure!



SCHÜTZINGER

Gerhard Schützinger

Labor-Schütz GmbH

Eichwiesenring 6

D-70567 Stuttgart

Germany

Phone +49 (0) 711/715 46-0

Fax +49 (0) 711/715 46-40

info@schuetzinger.de

www.schuetzinger.de